

**Every body is different.**

**So our mattress overlays  
and cushions adjust to fit.**



## Protection for all shapes and sizes.

The PRODIGY Mattress Overlay® and the MOSAIC® Cushion both feature flexible, interconnected air cells that can be adjusted to closely cradle the body's unique shapes and sizes.

Both products setup quickly and easily. Air is released through the valve until your patient is immersed, but still suspended above the mattress or chair surface approximately .5"/1.2cm. This equally distributes pressure, protecting vulnerable body prominences like shoulders, heels and hips. Blood flow is enhanced so oxygen and nutrients can get to all areas, and skin breakdown is no longer a concern.

The PRODIGY Mattress Overlay and MOSAIC Cushion can be adjusted to fit every body's unique shape & size, and can also offer a unique combination of features and value. No other products in their class have such thoughtful design, and no product above their class can touch the price.



**The PRODIGY Mattress Overlay.** For patients who are suffering from Stage I or II pressure ulcers and have had a history of skin breakdown, and for patients who require comfort and protection.



**The MOSAIC Cushion.** For patients who need comfort and protection against skin breakdown.

## What is DRY FLOATATION technology?

---

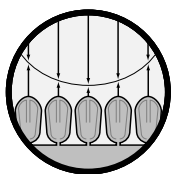
### ***An Inspired Concept***

When Robert H. Graebe saw his first pressure ulcer it affected him deeply. His shock and concern drove him to develop ROHO® DRY FLOATATION® technology, a simple system that uses air to duplicate water's way of equalizing pressure.

This innovation was first used in 1971 to cushion wheelchairs, then later for mattress overlays. Today, uses are diverse. ROHO technology helps patients, truckers, athletes and even motorcyclists. It'll be interesting to see who is next.

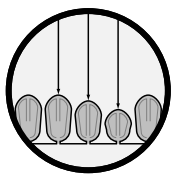
## A Solution Based on Principle.

---



### ***Low Surface Tension***

The unique cellular design allows for immersion into the cushion without deforming tissue, minimizing the chance of skin breakdown.



### ***Constant Restoring Forces***

When a patient is immersed in a ROHO DRY FLOATATION product, the forces and pressures pushing back are kept equal at all points. As the body is immersed, greater contact area is achieved for dispersion of pressure. Thus, the pressure on any one area is minimized.



### ***Low Friction and Shear***

As a result of the two previous principles, DRY FLOATATION technology provides a low friction and low shear environment. Friction acts to oppose the direction of motion, or impending motion. Shearing occurs when opposite, but parallel forces meet. The outcome inhibits blood flow. The slick surface of the ROHO cells combined with the independent movement of each cell greatly reduces friction and shear as clients move.

## Easy to live with, whatever your situation.

The PRODIGY Mattress Overlay and MOSAIC Cushion take some of the pressure off your patient, and also take some of the pressure off you. Look below for an explanation of specific features and how they benefit patient and caregiver.

**Adjustable:** PRODIGY Overlay has three zones for a customized fit. Each section can be adjusted to address the specific needs of body shape and size. The MOSAIC Cushion is also designed to adjust to your patients needs. Both products can be adjusted to accommodate changes in patient condition and body shape, to facilitate blood flow. More protection, more physical and emotional relief.

*Higher degree of prevention and protection lightens workload.*

**Lightweight:** PRODIGY Overlay weighs 6 lbs/2.7 kg for a complete system.

MOSAIC Cushion weighs just 1 lb/.45 kg.

Transport with little effort, reducing fatigue.

*Easy to handle and carry during setup, inflation and adjustment.*

**Non-Powered:** Requires no power source for use.

Quieter, more comforting environment. No added electrical costs.

*Relieves costs associated with energy consumption, no pump or blower failure worries.*

**Construction:** Interconnected air cells.

PRODIGY Overlay also has drainage holes.

Holes pull moisture away, air circulation keeps body dry and cool.

*Works in a variety of treatment situations, including incontinence or extreme moisture.*

**Material:** Made of soft, sturdy polyvinyl.

Reacts to movements, so contact and support are maintained.

*Cleans up easily with soap and water, can be patched for longer life.*

### MOSAIC Cushion vs. other chair cushions

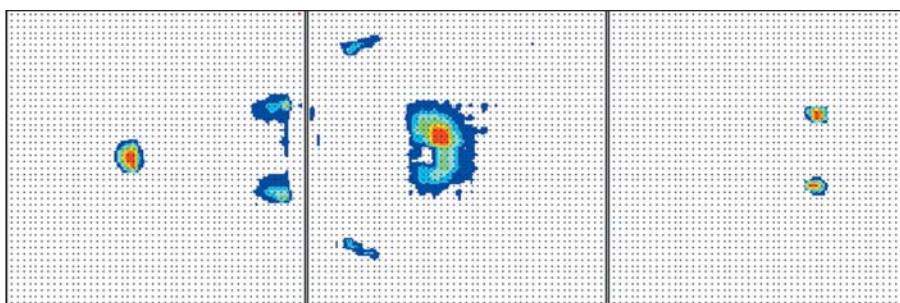
	MOSAIC	Foam	Gel	Static Air
Adjustable	X			
Lightweight	X	X		X
Repairable	X			
Easy-to-Clean	X		X	X
Incontinent Cover	X	Some Brands	Some Brands	Some Brands
Constant Restoring Forces	X			
Anti-Microbial	X		Some Brands	Some Brands

### PRODIGY Mattress Overlay vs. other mattress overlays

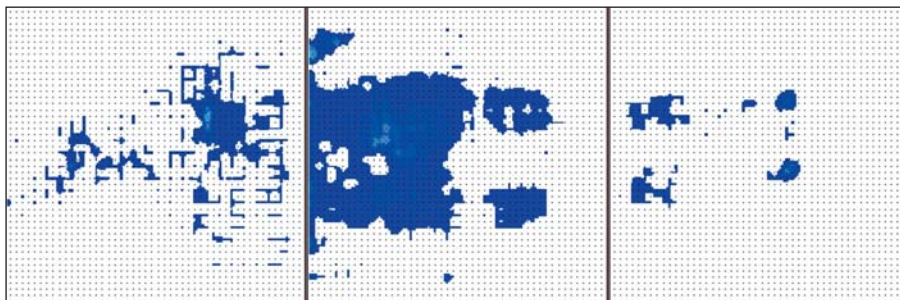
	PRODIGY	Foam	Gel	Static Air	APP
Adjustable	X				
Multi-Zoned	X				
Lightweight	X	X		X	Some Brands
Non-Powered	X	X	X	X	
Repairable	X				
Easy-to-Clean	X		X	X	X
Drainage Holes	X			Some Brands	
Incontinent Cover	Sold Separately	Some Brands	Some Brands	Some Brands	Some Brands
Constant Restoring Forces	X				
Anti-Microbial	X		Some Brands	Some Brands	Some Brands

## See what a patient feels with pressure mapping.

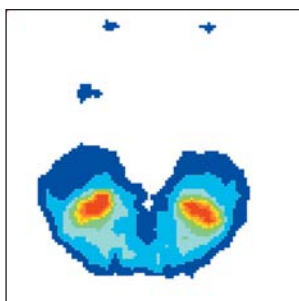
Please take a look at the pressure maps below. They clearly illustrate how the PRODIGY Mattress Overlay and MOSAIC Cushion provides greater contact area distributing pressure evenly to protect areas prone to skin breakdown. We've used a thin woman, age 56, with chronic fibromyalgia for all maps. As you examine the maps, keep in mind that the "hotter" the color, the higher the pressure.



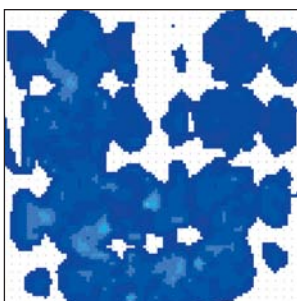
**Individual reclined on standard hospital mattress.**



**Individual reclined on PRODIGY Mattress Overlay.**



**Individual seated on foam cushion.**



**Individual seated on MOSAIC Cushion.**

# You can spend hours treating a pressure sore. Or you can take a few minutes to prevent one.

---



## **PRODIGY Mattress Overlay Specifications**

- Includes:** Three section mattress overlay, hand inflation pump, patch kit, and operating instructions.
- Construction:** Durable polyvinyl.
- Weight:** 6 lbs/2.7 kg for a complete system, 2 lbs/.9 kg per section.  
Weight Limit: 300 lbs/135 kg
- Size:** Zoned. Three sections each 27" x 35"/68 cm x 89 cm.  
Complete system 80" x 35"/203 cm x 89 cm.
- Cleaning:** Soap and water. Do not autoclave.
- Flammability:** Meets CFR 1632.
- Anti Microbial:** Passed ASTM G21-75 for microbial resistance.
- Warranty:** 12-month limited.
- Use:** Single patient.

MODEL	DESCRIPTION
PRODIGYEA	PRODIGY Mattress Overlay (Single Section)
PRODIGYSYS	PRODIGY Mattress Overlay (Three Sections)



## **MOSAIC Cushion Specifications**

- Includes:** Cushion, hand inflation pump, cover, patch kit, and operating instructions.
- Construction:** Durable polyvinyl.
- Weight:** Approximately 1 lb/.45 kg.  
Weight Limit: 350 lbs/157 kg
- Cleaning:** Soap and water. Do not autoclave.
- Flammability:** Meets CFR 1632. Cushion passes CAL 116 & 117. Cover passes CAL 117.
- Anti Microbial:** Passed ASTM G21-75 for microbial resistance.
- Warranty:** 12-month limited.
- Use:** Single patient.

MODEL	CHAIR SIZE
MOS1616	16" x 16"/41 cm x 41 cm
MOS1816	18" x 16"/48 cm x 41 cm or 16" x 18"/41 cm x 48 cm
MOS1818	18" x 18"/48 cm x 48 cm



100 North Florida Avenue • Belleville, IL 62221-5429 • USA • [www.therohogroup.com](http://www.therohogroup.com)  
U.S. & Canada: 1-800-851-3449 • 618-277-9173 • fax 888-551-3449  
Outside the U.S. & Canada: 618-277-9150 • fax 618-277-6518